

ULTIMATE
究極 SHORT THROW

Ultimate Short Throw LCD Projectors

For Business and Education

▶ CP-AW251NM ▶ CP-A301NM ▶ CP-A221NM

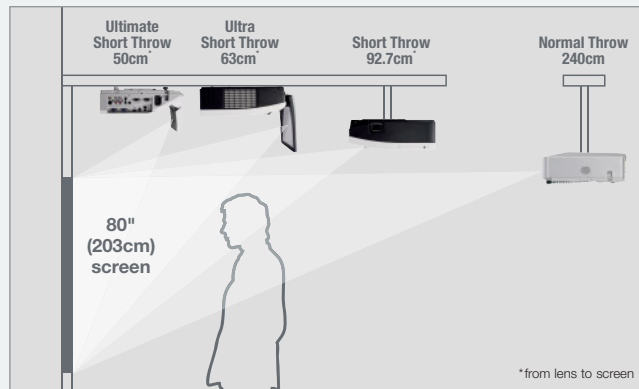


The HD ready logo (and all references to HD) applies to CP-AW251NM only

HITACHI
Inspire the Next

What is Ultimate Short Throw?

An Ultimate projector isn't only about throw distance; it's a combination of features that make it stand out from ordinary short throw projectors. Extremely short throw distances often result in distorted and poor image quality, but not the Ultimate Short Throw. Hitachi's Ultimate Short Throw projector achieves just the optimum balance between throw distance and image quality.



Ultimate Short Throw can be defined as:

Ultimate in Picture Quality

- Throw ratio of less than 0.35:1
- Distortion of less than 0.5% corner to corner
- Digital image correction for barrel, pincushion and corner distortion

Ultimate in Installation

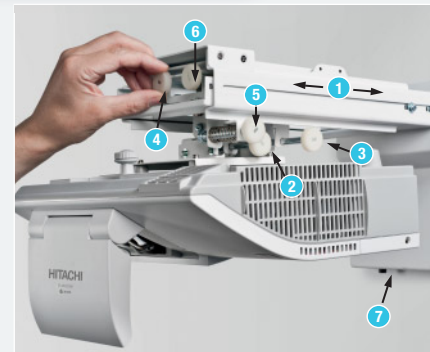
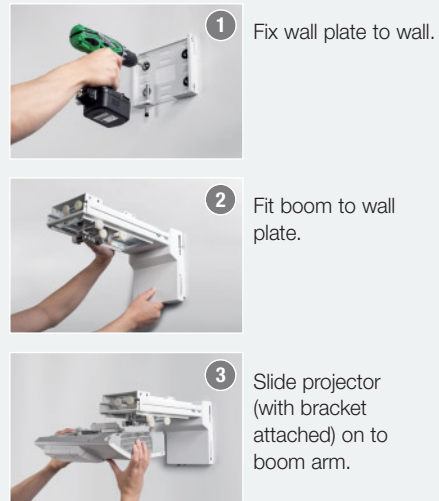
- Available wall mount with minimum 6 axis fine adjustment
- Projector weight less than 4Kg
- Installation possible by 1 person
- Built in templates for installation

Ultimate in Connectivity

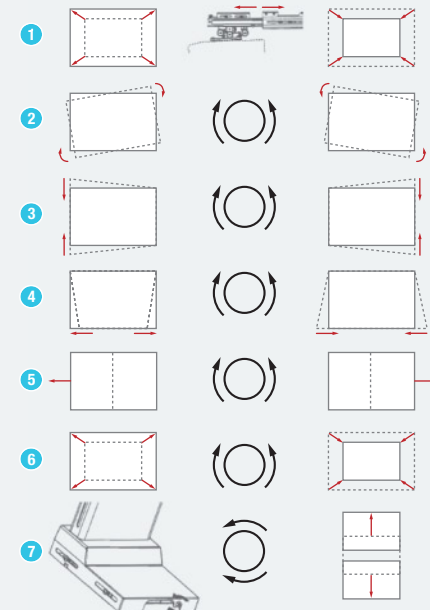
- Audio output > 7W
- HDMI, RGB and Video (Component, Composite or S-Video) inputs
- RS-232 control port
- Audio Pass through in Standby Mode
- Ethernet connection with free control and monitoring software

Easy installation and adjustment

The light weight design enables a single person to mount the projector quickly in a few simple steps.



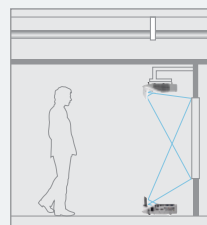
For fine adjustment all 6 axis can be individually corrected using the large dials located on the exceptionally versatile Hitachi mount. The diagrams opposite show how each dial can correct an image. In addition there is a fine vertical adjustment which can move the entire image up or down.



Ultimate Flexibility

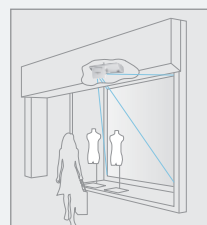


The Ultimate Short Throw projectors are easy to install and flexible to use. With the bundled wall mount and optional table top kit you can transform any existing whiteboard, wall or table top into a projected surface.



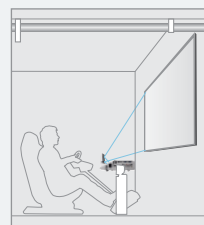
False/High ceilings

Rooms with awkward ceilings – the Ultimate Short Throw projectors can be wall mounted, therefore problems relating to large voids above suspended ceilings are a thing of the past.



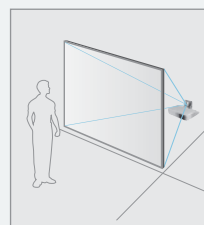
Shop window

Ultimate Short Throw Technology opens up a world of new possibilities in retail and digital signage applications. From shop window installations to maps in airport lounges, images can be projected on to surfaces that were never thought possible.



Entertainment

Get closer to the action than ever. Create an immersive experience by projecting large screens for gaming and videos with no shadowing effects.



Rear projection

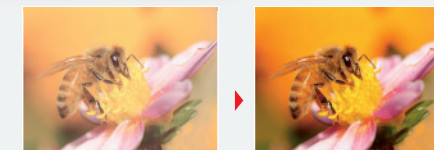
Ideal for rear projection due to the short throw distance, resulting in a clean and compact space-saving installation.

Ultimate Picture Quality



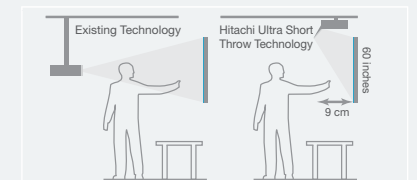
Perfect Fit

The enhanced Hitachi Perfect Fit now incorporates eight point adjustment which includes all four corners and sides. This intuitive feature helps make correcting complicated or geometric distortions caused by imperfections in screen flatness as quick as possible.



Daytime Mode

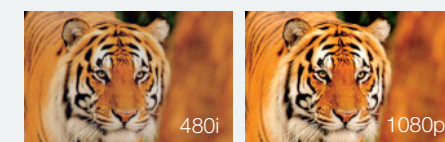
Projected images may sometimes be difficult to see under bright lighting. The Daytime Mode uses image quality correction technology to counter the effects of light, ensuring clear, vivid images.



No glare or shadows

Traditional projectors dazzle people, Hitachi's unique Ultra Short Throw Technology means if you stand in front of the projector the light beam won't shine in your eyes.

Ultimate Connectivity



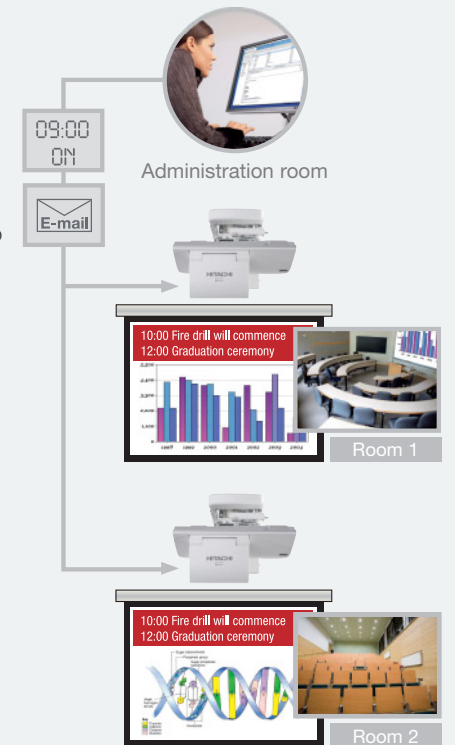
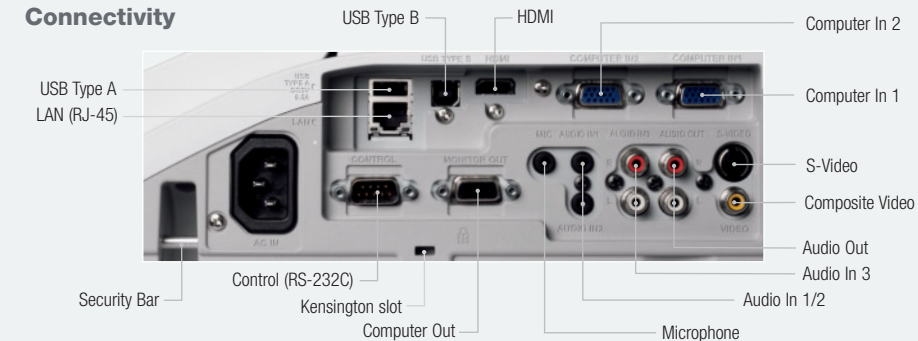
Full HD 1080p signal support

With the inclusion of an HDMI port the Ultimate range of projectors are capable of supporting Full HD signals from a range of devices including a Blu-ray player, perfect if you wish to watch a film on a large screen.

Convenient networking functions

The Ultimate Short Throw range offers flexible networking capabilities. Administrators can conveniently schedule a variety of actions for multiple projectors on the network, including automatic Power On/Off and Centralised Reporting. The clever messenger function also allows messages to be sent to multiple projectors instantly or at a specified time. This is ideal for information which needs to go out over a large area fast.

Connectivity



Ultimate Reliability

Eco-friendly and highly reliable with fewer components

To ensure our new Ultimate Short Throw models are highly reliable and light weight we have consolidated their components and used fewer screws to manufacture them.

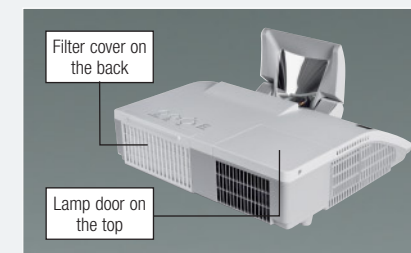
This means that not only will they require less maintenance but they also require less packaging. We are also working hard to curb greenhouse gas emissions in every phase of our production process by implementing the following:

Paint-free casing

Paint can release harmful emissions into the air and environment, so we choose alternatives for our projectors.

Recyclable carton boxes

Our carton boxes are now made of 100% recyclable material, so they shouldn't contribute to landfill waste.






Easy Maintenance

Now you can benefit from extended maintenance intervals with Hitachi's hybrid filter and long life lamp. Both last up to an exceptional 5000 hours and can be replaced easily using the cover located on the back of the projector.



Versatile Security Functions

Projectors are equipped with a security bar allowing a chain to be attached.

			
MODEL	CP-AW251NM	CP-A301NM	CP-A221NM
	MULTI PURPOSE	MULTI PURPOSE	EDUCATION
OPTICAL			
Resolution	WXGA (1280 x 800)	XGA (1024 x 768)	XGA (1024 x 768)
Light output (brightness)	2500 Lumens (Normal Mode)/1700 Lumens (Eco Mode)	3000 Lumens (Normal Mode)/2000 Lumens (Eco Mode)	2200 Lumens (Bright Mode)/1500 Lumens (Normal Mode)
Contrast ratio	2000:1	2000:1	2000:1
Lens	Free shaped lens and motorised free shaped mirror	Free shaped lens and motorised free shaped mirror	Free shaped lens and motorised free shaped mirror
Mirror	Yes (motorised)	Yes (motorised)	Yes (motorised)
Lamp life	3000 hours (Normal Mode)/5000 hours (Eco Mode)*	3000 hours (Normal Mode)/5000 hours (Eco Mode)*	3000 hours (Bright Mode)/5000 hours (Normal Mode)*
Diagonal display size	60~100" (152~254cm)	60~100" (152~254cm)	60~100" (152~254cm)
Keystone correction	Fixed, 5.2:-1 upward shift	Fixed, 6.1:-1 upward shift	Fixed, 6.1:-1 upward shift
Distance to width ratio (:1)	0.3:1 (fixed)	0.3:1 (fixed)	0.3:1 (fixed)
COMPATIBILITY			
Computer compatibility	IBM Compatible VGA, SVGA, XGA, WXGA, WXGA+, SXGA, WSXGA+, UXGA, MAC 16"	IBM Compatible VGA, SVGA, XGA, WXGA, WXGA+, SXGA, SXGA+, UXGA, MAC 16"	IBM Compatible VGA, SVGA, XGA, WXGA, WXGA+, SXGA, SXGA+, UXGA, MAC 16"
Composite/S-Video	NTSC/PAL/SECAM/PAL-M/PAL-N/NTSC4.43	NTSC/PAL/SECAM/PAL-M/PAL-N/NTSC4.43	NTSC/PAL/SECAM/PAL-M/PAL-N/NTSC4.43
Video Compatibility	SDTV: 525i(480i), 525p(480p), 625i(576i) HDTV: 750p (720p@60Hz), 1125i(1080i@50/60Hz), 1125p(1080p@50/60Hz)	SDTV: 525i(480i), 525p(480p), 625i(576i) HDTV: 750p (720p@60Hz), 1125i(1080i@50/60Hz), 1125p(1080p@50/60Hz)	SDTV: 525i(480i), 525p(480p), 625i(576i) HDTV: 750p (720p@60Hz), 1125i(1080i@50/60Hz), 1125p(1080p@50/60Hz)
FEATURES			
Speaker	10W Mono	10W Mono	10W Mono
Basic functions	Freeze, Magnifying, Blank, Auto adjustment, Search	Freeze, Magnifying, Blank, Auto adjustment, Search	Freeze, Magnifying, Blank, Auto adjustment, Search
Picture adjustments	Digital zoom, Equalising Gamma Correction, 2-3 pull down, Progressive Scan, Noise Reduction, Perfect Fit	Digital zoom, Equalising Gamma Correction, 2-3 pull down, Progressive Scan, Noise Reduction, Perfect Fit	Digital zoom, Equalising Gamma Correction, 2-3 pull down, Progressive Scan, Noise Reduction, Perfect Fit
Digital keystone	Manual Vertical and Horizontal Keystone Correction	Manual Vertical and Horizontal Keystone Correction	Manual Vertical and Horizontal Keystone Correction
Advanced features	PC-less drawing function (optional wireless tablet required), MyScreen, My Memory, My Button by remote control, Blackboard Mode, Whiteboard Mode, Daytime Mode, Input source naming (English), Resolution setting, Template, Saving, Mode, AudioPass through, My Text	PC-less drawing function (optional wireless tablet required), MyScreen, My Memory, My Button by remote control, Blackboard Mode, Whiteboard Mode, Daytime Mode, Input source naming (English), Resolution setting, Template, Saving, Mode, AudioPass through, My Text	PC-less drawing function (optional wireless tablet required), MyScreen, My Memory, My Button by remote control, Blackboard Mode, Whiteboard Mode, Daytime Mode, Input source naming (English), Resolution setting, Template, Saving, Mode, AudioPass through, My Text
Outward	Easy Lamp replace from Top, Rear intake air filter	Easy Lamp replace from Top, Rear intake air filter	Easy Lamp replace from Top, Rear intake air filter
Power on & off	Quick ON, Direct ON, Direct Off	Quick ON, Direct ON, Direct Off	Quick ON, Direct ON, Direct Off
Security systems	PIN-Lock, MyScreen PIN-Lock, Keypad Lock, Kensington slot, Transition Detector, Security bar	PIN-Lock, MyScreen PIN-Lock, Keypad Lock, Kensington slot, Transition Detector, Security bar	PIN-Lock, MyScreen PIN-Lock, Keypad Lock, Kensington slot, Transition Detector, Security bar
Network	Configure and control projector via web browser, receive alerts via e-mail, projector management via SNMP, Scheduling, My Image, displaying text data transferred via the network, Command Control via network, AMX Device Discovery, Messenger, PJ Link™, Network Bridge, content via LAN, MAC address displayed on the side	Configure and control projector via web browser, receive alerts via e-mail, projector management via SNMP, Scheduling, My Image, displaying text data transferred via the network, Command Control via network, AMX Device Discovery, Messenger, PJ Link™, Network Bridge, content via LAN, MAC address displayed on the side	Configure and control projector via web browser, receive alerts via e-mail, projector management via SNMP, Scheduling, My Image, displaying text data transferred via the network, Command Control via network, AMX Device Discovery, Messenger, PJ Link™, Network Bridge, content via LAN, MAC address displayed on the side
CONNECTIONS			
Digital input	1 x HDMI	1 x HDMI	1 x HDMI
Computer input	2 x 15-pin Mini D-sub	2 x 15-pin Mini D-sub	2 x 15-pin Mini D-sub
Monitor output	1 x 15-pin Mini D-sub	1 x 15-pin Mini D-sub	1 x 15-pin Mini D-sub
Video input	1 x RCA Jack (for composite) 1 x S-Video Jack	1 x RCA Jack (for composite) 1 x S-Video Jack	1 x RCA Jack (for composite) 1 x S-Video Jack
Audio input	2 x Component D-sub (shared with analogue RGB) 2 x Stereo Mini Jack 1 x Pair RCA (L/R) 1 x Microphone Jack	2 x Component D-sub (shared with analogue RGB) 2 x Stereo Mini Jack 1 x Pair RCA (L/R) 1 x Microphone Jack	2 x Component D-sub (shared with analogue RGB) 2 x Stereo Mini Jack 1 x Pair RCA (L/R) 1 x Microphone Jack
Audio output	1 x Pair RCA (L/R)	1 x Pair RCA (L/R)	1 x Pair RCA (L/R)
USB Type A	1 (for PC-less presentation and optional wireless pen tablet)	1 (for PC-less presentation and optional wireless pen tablet)	1 (for PC-less presentation and optional wireless pen tablet)
USB Type B	1 (for mouse control)	1 (for mouse control)	1 (for mouse control)
Wired network	1 x RJ-45	1 x RJ-45	1 x RJ-45
Control	1 x 9-pin D-sub for RS-232C control	1 x 9-pin D-sub for RS-232C control	1 x 9-pin D-sub for RS-232C control
POWER			
Power supply	100-120V/220-240V, auto switching	100-120V/220-240V, auto switching	100-120V/220-240V, auto switching
Power consumption/Standby	300 W/<0.3W	300 W/<0.3W	300 W/<0.3W
PHYSICAL			
Dimensions (W x H x D)	345 x 85 x 303mm (excluding feet and extrusions when mirror is closed)	345 x 85 x 303mm (excluding feet and extrusions when mirror is closed)	345 x 85 x 303mm (excluding feet and extrusions when mirror is closed)
Weight	3.8Kg	3.8Kg	3.8Kg
Noise level	35dB (Normal Mode)/29dB (Eco Mode)	35dB (Normal Mode)/29dB (Eco Mode)	34dB (Bright Mode)/28dB (Normal Mode)
Air filter	Hybrid (up to 5000 hours)	Hybrid (up to 5000 hours)	Hybrid (up to 5000 hours)
MISCELLANEOUS			
	Lamp indicator light, Power light, Ceiling mount image, Rear projection image, Serial number label on side	Lamp indicator light, Power light, Ceiling mount image, Rear projection image, Serial number label on side	Lamp indicator light, Power light, Ceiling mount image, Rear projection image, Serial number label on side
ACCESSORIES SUPPLIED			
	Remote control with batteries, RGB cable, power cord, cable cover, security label, user manual (detail & concise), wall mount (HAS-K250)	Remote control with batteries, RGB cable, power cord, cable cover, security label, user manual (detail & concise), wall mount (HAS-K250)	Remote control with batteries, RGB cable, power cord, cable cover, security label, user manual (detail & concise), wall mount (HAS-K250)
Remote Control	HL02772	HL02772	HL02772
OPTIONAL ACCESSORIES			
Replacement lamp/lamp Wattage	DT01181/210W (UHP)	DT01181/210W (UHP)	DT01181/210W (UHP)
Table top stand	TT-251	TT-251	TT-251
WARRANTY			
Projector warranty/lamp warranty	3 Years/6 Months**	3 Years/6 Months**	3 Years/3 Years***

HITACHI DIGITAL MEDIA, Hitachi Europe Ltd, Whitebrook Park, Lower Cookham Road, Maidenhead, Berkshire SL6 8YA UNITED KINGDOM
Tel: +44 (0)1628 585 000 Fax: +44 (0)1628 585 163 www.hitachidigitalmedia.com

*The stated lamp and filter life refers to the average life expected in ideal operating conditions with usage in accordance with the manual. The majority of, but not all lamps and filters should achieve this figure. **A free replacement lamp will be issued if the original lamp is less than 6 months old and it has only been used for less than the hours stated on lamp warranty from the date of first use. Where a lamp fails and a replacement lamp is taken under warranty, the duration of the warranty for the replacement lamp shall be the remainder of the original warranty period only. ***A free replacement lamp will be issued if the original lamp is less than 3 years old and it has only been used for less than the hours stated on lamp warranty from the date of first use. Where a lamp fails and a replacement lamp is taken under warranty, the duration of the warranty for the replacement lamp shall be the remainder of the original warranty period only. The "HD ready" Logo is a trademark of EICTA. HDMI, the HDMI logo and High-Definition Multimedia Interface are trademarks or registered trademarks of HDMI Licensing LLC. AMX and the AMX logo, and Device Discovery are all registered trademarks of AMX. The specification above and photography is for reference only and may be subject to change.