



High Precision Tracking And Intelligent Interior Behaviors Analysis For Retail Stores

High Precision Tracking

- Precise People Counting, Flow and Path Orientation (Entry/Exit in 4 Directions)
- Suspicious Activity Detection and Lower-Cost Loss Prevention
- Accurate Real-Time Customers Tracking w/o Privacy Concerns
- Improve Customer Experience Using Analytics

Intelligent Interior Behaviors Analysis

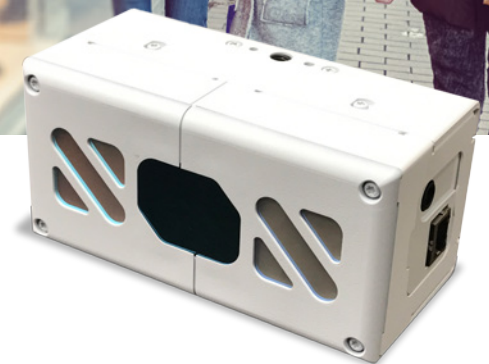
- Dwell and Queuing, Whole-Store Heatmap
- Optimize Customer Services and Staffing Operations
- Accurate Real-Time Consumers Shelf Monitoring

Additional Offerings from Hitachi:

- Real-Time Edge Analytics Libraries
- Integrated with Business Analytics Platforms (Pentaho)
- Professional Support for Customization



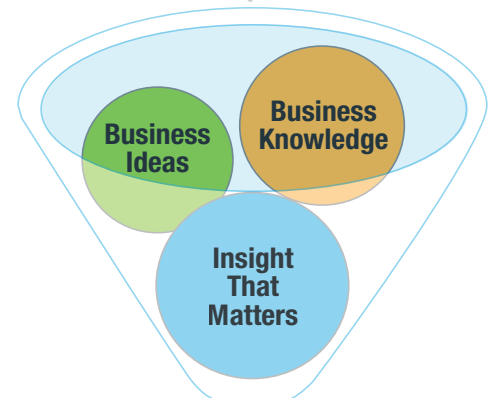
Transforming Your Business With Insight That Matters



3D Intelligent Platform



Data Analytics



New Values



High Precision In-Store Tracking for Retailers

The sensor can detect when someone reaches out to a specific shelf or picks up goods or measures dwelling time, and sends alert information in real time to store personnel.

The sensor can detect abnormal behaviors or suspicious activities which can prevent incidents and losses.

Used in connection with ID cards, the sensor can detect when someone without an ID card follows someone with a card and alert security personnel, eliminating intruders or unauthorized persons.

3D-LiDAR (ToF) Motion Sensor Platform

The Hitachi 3D-LiDAR (ToF) Motion Sensor Platform calculates movement and provides data in real time using infrared beam technology. The measurement is based on the time it takes light to travel to the object and back to the sensor, or the "time of flight" (ToF).

Various edge analytics libraries are available for evaluation and customization.



Specifications	
Sensing Distance	2.3 ft. ~ 32.8 ft. (0.7 ~ 10 m)
FOV	H76° x V60°
Pixel Resolution	640 x 480 (10 ~ 30 fps) Transfer data can be set to downsizing
Distance Resolution	X,Y:6 mm, Z:8 mm @ 2 m
Lighting	Infrared IR LD
Size	5.4" x 2.7" x 2.7" 138 x 69 x 69 mm (Excluding projecting parts)
Weight	540 g (Excluding cable)
Interface	Ethernet 100 base-TX (Power is provided by POE+)
Illumination Condition	Under 10,000 Lux (Indoor @ daytime)
Temperature & Humidity Condition	0~45°C (Operable at 50°C) 0~95% (Non-condensing)
Laser Class	Laser class 1
Power Consumption	15W

Specification is for standard model HLS-LFOM1-AOSB701

Robot Operating System (ROS) driver is available

Europe, Middle East and Africa

For Sales and Technical information, please contact:

Hideki Hayashi

+44 7825 676207

hideki.hayashi@hitachi-eu.com

HI0534-Rev.1-03/17
All specifications subject to change
without notice. ©2017 Hitachi Europe,
Ltd. All Rights Reserved.

Hitachi Europe Ltd. Digital Media Group, Security Product Group

Whitebrook Park, Lower Cookham Road, Maidenhead, Berkshire, SL6 8YA, United Kingdom

Email: dmgspg.sales@hitachi-eu.com • Web: hitachidigitalmedia.com/tof