

3D Time of Flight (TOF) Motion Sensor

HITACHI
Inspire the Next

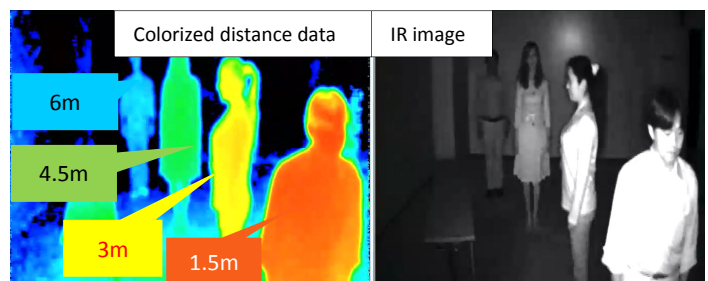


Key Features

- Colorized distance data
- Infrared rays enable detection in dark areas
- Collects highly reliable and accurate data better than stereo cameras
- Adopted "Ethernet POE+" interface

Specifications

Sensing distance	0.7~10m
FOV	H76 ° x V60°
Pixel Resolution	640x480 (10~30 fps) Transfer data can be set to downsizing.
Distance Resolution	X,Y:6mm ,Z:8mm @2m
Lighting	Infrared IR LD
Size	138x69x69mm(Excluded projecting part)
Weight	500g(Excluded cable)
Interface	Ethernet 100BASE-TX (Power is provided by POE+)
Illumination condition	Under 10,000 Lux (Indoor @ daytime)
Temperature & Humidity condition	0~45°C(Operable at 50°C) 0~95%(Non-condensing)
Laser Class	Laser class 1
Power consumption	15W



Suggested applications for 3D TOF Motion Sensor

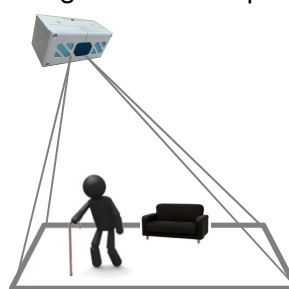
Retail Security



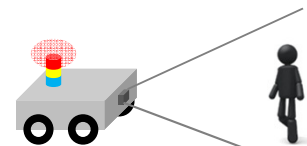
Loss Prevention



Fall prevention solution Nursing home or hospital



Unmanned fork lift Warehouse



SDK (API) to connect with existing application software is provided.

For additional information, please contact:

Europe, Middle East and Africa

Hideki Hayashi

Tel: +44 7825 676207

hideki.hayashi@hitachi-eu.com

1. Certified to Class 1 for JIS Safety standard.

Class1: No impact to the human body (eyes and skin)

Sensor is 1/5 or less of minimum Class 1 safety standard.

2. Adopts the same sensor as TV remote control and garage door.

H·L Data Storage

Hitachi LG Data Storage Inc.